

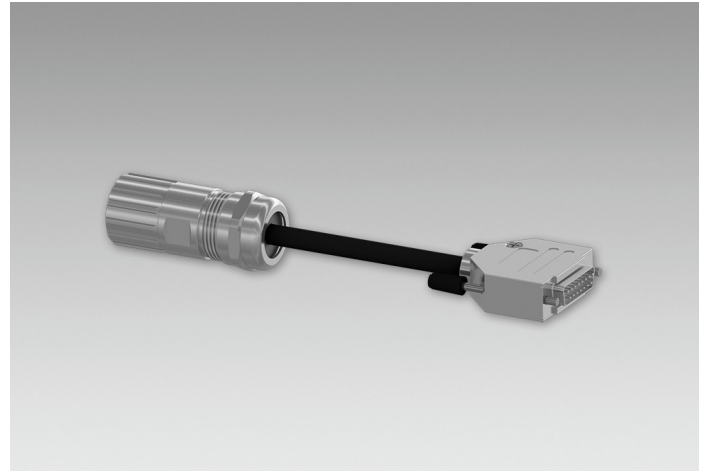
Programming cable for HMG10/PMG10 SSI - M23

– 1 m

Article number: 11210827

Overview

- Adapter cable for programming the HMG10P/PMG10P SSI series with flange connector/s
- With D-SUB connector (male) for connection of encoders of HMG10/PMG10 SSI series with flange connector/s to the WLAN adapter Z-PA.SDL.1.
- The encoder can be connected to the WLAN adapter in OFFLINE mode.



Technical data

Technical data

Cable length	1 m
Connection	Connector D-SUB (male), 15-pin (Z-PA.SDL.1 WLAN adapter) Mating connector M23, 17-pin (encoder)

Scope of delivery

Mating connector M23, 17-pin, CCW with connecting cable and connector D-SUB (male) 15-pin (OFFLINE mode)

Suitable for

Z-PA.SDL.1 WLAN adapter, HMG10P/PMG10P

Terminal assignment

View A

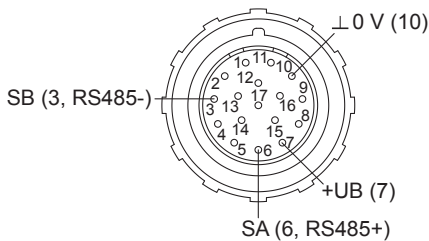
Connection to encoder HMG10P/PMG10P

View B

Loop-through signals of the encoder, connection to control

View X

Programming interfaces for connection to the encoder
At the tee connector M23, the power supply for the encoder is not connected to the WLAN adapter (pin 7 + 10 are not connected).



Terminal assignment

View Y

D-SUB connector (male) for connection to the WLAN adapter

